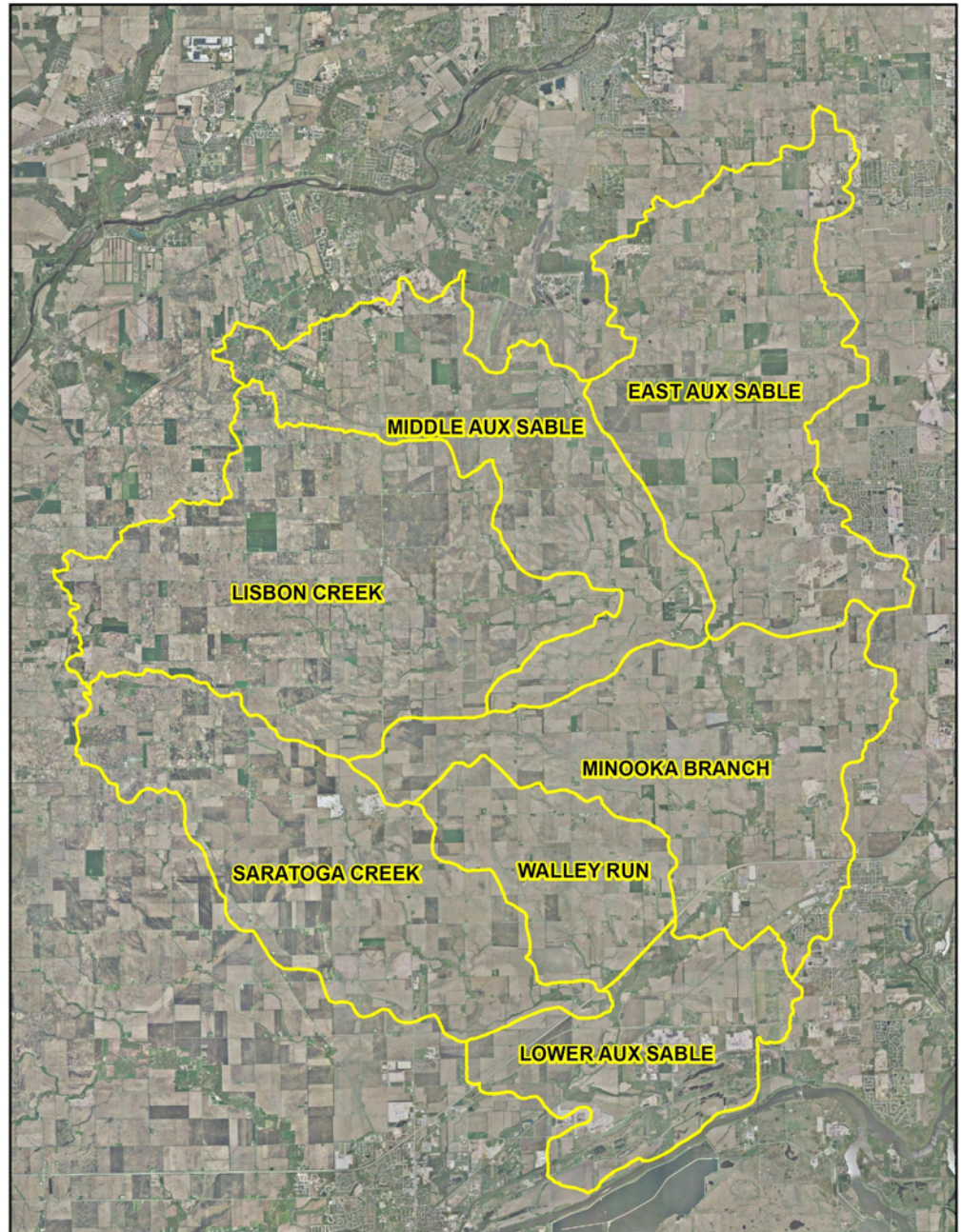


AUX SABLE CREEK WATERSHED PLAN

Completed June 1, 2009

This plan was prepared, in part, using U.S. EPA funds under Section 319 of the Clean Water Act distributed through Illinois EPA.

The findings and recommendations are not necessarily those of the funding agencies.



Prepared By:

Wills Burke Kelsey Associates, Ltd.
116 W. Main Street Suite 201
St. Charles, IL 60174

Phone: (630) 443-7755
Fax: (630) 443-0533
www.wbkengineering.com

